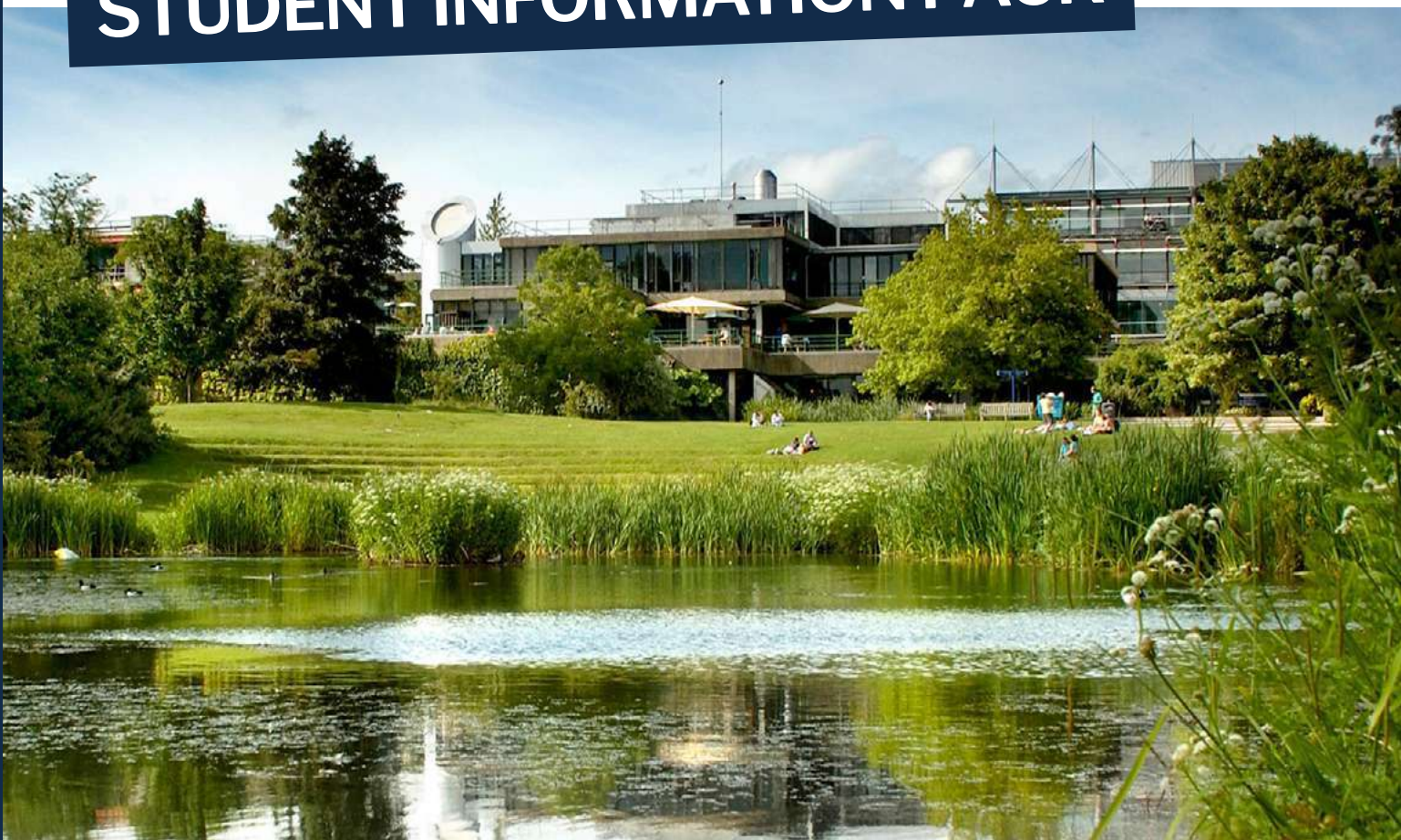




Ardmore

Helping Young Minds Meet the World

STUDENT INFORMATION PACK



JUNIOR RESIDENTIAL LANGUAGE COURSE

Ardmore Language Schools
University of Bath
East Car Park
Claverton Down
Bath BA2 7PB

www.theardmoregroup.com

WELCOME TO Ardmore

Thank you for choosing
Ardmore Language Schools
for your Junior Vacation.

We would like to welcome you to your
Ardmore Centre and wish you a great
stay, full of fun and lasting memories.

This Information Pack will provide
you with some information about
your centre, the programme,
what you can expect, your role
and what to bring with you.

*Wishing you a fantastic stay
with Ardmore.*

The Ardmore Team



Contents

| | |
|-------------------------------|----|
| Welcome to Ardmore | 02 |
| Centre Information | 04 |
| Sample Programme & Facilities | 05 |
| Ardmore Team | 06 |
| Student Role at The Centre | 07 |
| Arrival Day | 08 |
| Ardmore Programme | 09 |
| Excursions | 10 |
| Location details | 11 |
| What's Expected of Students | 12 |
| What to Bring With You | 13 |
| Specialist Courses | 14 |

Accredited by

ALTO

Association of
Language Travel
Organisations

TRINITY
COLLEGE LONDON

Accredited by the
**BRITISH
COUNCIL**
for the teaching
of English in the UK

B
BETA
Founder Member

MEMBER
**ENGLISH
UK**

**Language
Cert**

UKINBOUND
MEMBER 2016/17



UNIVERSITY OF BATH



- Easy access to city centre
- Good sport facilities
- UNESCO World Heritage city
- Modern campus

East Car Park, Claverton Down, Bath, BA2 7PA

9-13 & 14-18 YEARS • GROUPS & INDIVIDUALS • 500 ARDMORE BEDS • RESIDENTIAL

The ancient Roman City of Bath, a UNESCO World Heritage City, is a wonderful and idyllic location for an English language course. It offers students of all ages the perfect balance between culture and history with modern shops and attractions.

Bath has a wide variety of historic and cultural sites such as the Roman Baths, theatres, Bath Abbey, Royal Crescent, and museums all set alongside a modern new shopping area with cafés and restaurants overlooking the River Avon.

Accommodation

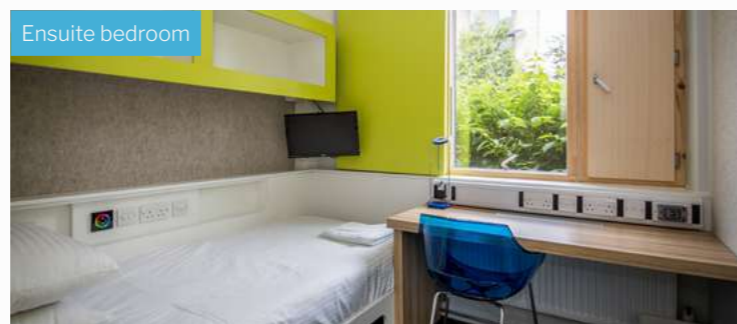
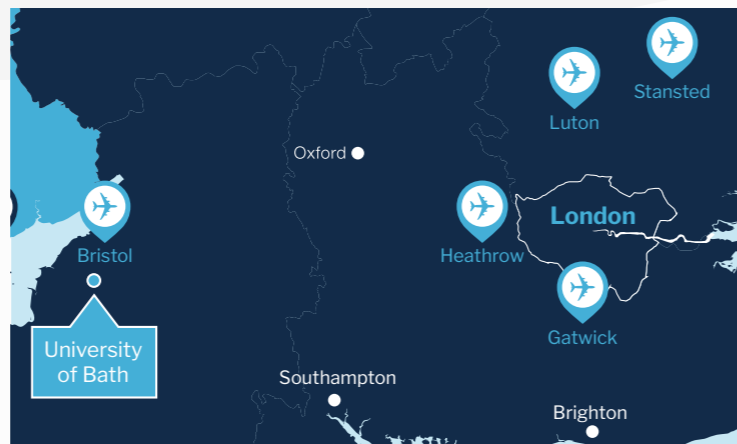
- Single en-suite rooms
- Single rooms with shared facilities available
- Accommodation in modern blocks on campus
- Shared kitchen and communal area in each accommodation block
- Wi-Fi available

Health care & security

- **Hospital:** Royal United Hospital – 15 minute drive
- **Staff:** Residential
- **Security:** 24 hours

Location

- **Nearest Town:** Bath - 35 minute walk or 10 minutes by public bus
- **Nearest Bus Stop:** On site
- **Airports:** Bristol Airport (60 minute by Coach or Car)
- **Nearest Shopping Centre:** Southgate Centre – 10 minute drive
- **Nearest Supermarket:** On site
- **Nearest Station:** Bath Spa – 15 minute drive
- **Travel time to London:** 120 minutes by Coach, 90 minutes by Train



DOWNLOAD THE FULL IMAGE GALLERY →



University of Bath Sample Programme (2 weeks)*

| | Morning | Afternoon | Evening |
|-----------|---|--|--------------------------|
| Sunday | Welcome to Ardmore | | |
| Monday | Lessons | Half Day Excursion to Bath Walking Tour and Orientation | Welcome Icebreaker Games |
| Tuesday | Lessons | Half Day Excursion to Bath with Tour by Professional Guide | Mini Olympics |
| Wednesday | Lessons | Tennis | Escape Room |
| Thursday | Lessons | Talent show preparation | Ultimate Frisbee |
| Friday | Lessons | Half Day Excursion to National Trust Bath Skyline Walk | Disco |
| Saturday | Full Day Excursion to London, Thames River Cruise and Westminster Walking Tour with Late return | | |
| Sunday | Sports and Leisure Activities on Campus / Optional Extra Excursions | | |
| Monday | Half Day Excursion to Bath Art Tour | Lessons | Sports Tournament |
| Tuesday | Half Day Excursion to Bath Abbey | Lessons | Quiz Night |
| Wednesday | Wii Dance | Clay Creation | Lessons |
| Thursday | Scavenger Hunt | Dodgeball | Lessons |
| Friday | Half Day Excursion to Bath Photo Scavenger Hunt | Lessons | Disco |
| Saturday | Full Day Excursion to Bristol, Suspension Bridge, Bristol Museum and Walking Tour | | |
| Sunday | Goodbye Ardmore | | |

English Lessons: (3 hours per day, 5 days per week); maybe morning or afternoon. **Sports / Activities & Project Work:** Football, tennis, basketball, baseball, volleyball, arts & crafts, etc; maybe morning or afternoon. **Excursions:** One half day and one full day excursion per week.

*The Programme may vary due to operational reasons

Meals

- **Breakfast:** 07.30 - 08.30
- **Lunch:** 12.30 - 13.15, packed lunch on weekends
- **Dinner:** 18.00 - 19.00

Lunch and dinner: Main, Salad and desert
Packed Lunch: Sandwich + Crisps + Fruit + Drink + Snack

Facilities

Modern Classrooms, Dining Hall, World Class Facilities
Sports Facilities: Beach Volleyball, Dance Studio, 3G Pitch, Grass Fields and Modern Sports Hall

Laundry

Card operated £3.50 wash, £2.00 dry**

**prices may vary



Additional Special Programme Available

Horse Riding Academy: For students who want to experience both Horse Riding and Horse Care as part of each session.

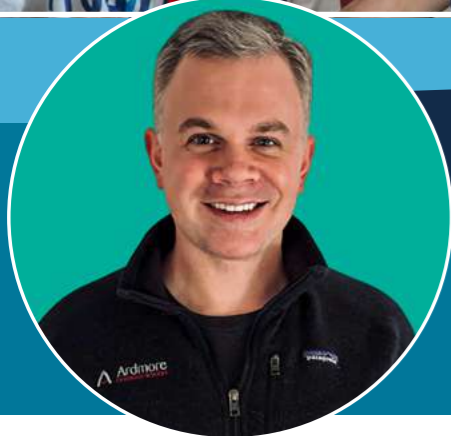
Golf Academy: Offers students the opportunity to have professional coaching in English, with a special emphasis on techniques and skills.

Performing Arts Academy: Our Performing Arts Academy has a brand new and fun curriculum which our experienced dance instructors will follow over a two-week course, creating a show for the final day of the course.



FOR MORE INFORMATION:

✉ info@theardmoregroup.com 🌐 theardmoregroup.com



ARDMORE TEAM



Hi, I'm Oliver, and I would like to take this opportunity to tell you a little bit more about our excellent staff and explain their roles in your Ardmore Centre.

**Oliver Smith, Managing Director
The Ardmore Group**

STUDENT ROLE AT THE CENTRE

The chart below illustrates your role at the centre and how each Ardmore team member interacts with you.



The Ardmore team have specific roles on centre to help you with all aspects of the programme. The chart above will give you information on each of the people you will meet on centre and their specific role on centre.





ARRIVAL DAY



Arrival to United Kingdom

You will be met at the Arrivals Lounge by our Ardmore Meet and Greet team. They will be wearing a red Ardmore t-shirt and will be carrying an Ardmore board with your group's name on it. After you have been met by the Meet and Greet team, they will lead you to your transport that will take you to your centre.

Emergency number: +447983 358942
Airport emergency number: +447867 530143



Airport Meeting Points

| Gatwick Airport | |
|--|--|
| North Terminal | South Terminal |
| Arrivals: Information desk (by arrivals area) | Arrivals: Costa (near arrival area) |
| Heathrow Airport | |
| Terminal 2 | Terminal 4 |
| Arrivals: Information desk (by arrivals area) | Arrivals: Costa Coffee (opposite arrivals area) |
| Terminal 3 | Terminal 5 |
| Arrivals: Tourist Services desk (by arrivals area) | Arrivals: Costa Coffee (opposite arrivals area) |
| Stansted Airport | St Pancras International |
| Arrivals: Tourist Services desk (by arrivals area) | Arrivals: Tourist Services desk (by arrivals area) |

Due to the high traffic of arrivals on arrival days, there may be a delay in your Meet & Greet. Please wait patiently at the meeting points identified above and an Ardmore representative will be with you as soon as possible. The above is with exception to Unaccompanied Minors who will not be left prior to check-in and handover to an Airline host upon departure, in line with Ardmore's Unaccompanied Minor Policy.

Arrival to Centre

You will be greeted by a member of Ardmore staff, who will allocate you to the room. You will be given time to settle in and unpack before having a welcome tour around the centre. The tour will show all the buildings, activity areas, classrooms as well as out of bounds areas to the students. Our staff will also explain the rules and regulations to you. Please do not hesitate to ask any questions about the centre while on tour; our staff is always happy to help.

Daily Schedule

| | |
|-------------------------------|-----------------------------------|
| Breakfast: | 7.30 - 8.30 (approximate) |
| Morning Lessons/Activities: | 9.00 - 12.30 (with 30 min break) |
| Lunch: | 12.30 - 13.30 (approximate) |
| Afternoon Lessons/Activities: | 14.00 - 17.30 (with 30 min break) |
| Dinner: | 17.45 - 19.00 (approximate) |
| Evening Activities: | 20.00 - 22.00 |
| Lights Out | 22.30 |



What's on the menu

In our centres, we want to offer our young learners nutritional, healthy and tasty meal, while at the same time they taste the British food. Please notice that those meals/menu listed below are examples and might vary from centre to centre. In each centre, we can cater different dietary requirements: vegetarian, vegan, gluten free, lactose free, coeliac, nuts allergy, halal. Please inform us at the moment of the booking, we will not charge you any extra cost.

Homestay students: from Monday to Friday, they receive a packed lunch, and they have hot dinner in the evening. While during the weekend, they have hot lunch and dinner. Breakfast is always consumed at home with the host family.

Full day excursion: When students are on excursion, they receive a packed lunch which includes a sandwich (wrap/bun/bagiette), a piece of fruit, a chocolate bar or a cookie, bottle of water or fruit juice.

BREAKFAST

There is a continental breakfast every day; depending on each centre, students might have a cooked item every day and a full English breakfast once per week.

- Cereal bar
- Yoghurt and fruit
- Scrambled egg
- Toast station or selection of pastries
- Sausages and bacon
- Tea & coffee, fruit juice

LUNCH & DINNER

We always provide a hot meal with the option to choose from two or three main courses. There is always available the salad bar with vegetables and cold proteins. In addition students can have a piece of fruit and/or a desert.

| | |
|--|--|
| <p>Lunch</p> <ul style="list-style-type: none"> • Jacket potatoes • Chicken and salsa wraps • Vegetable lasagne • Potatoes, broccoli, peas • Soup • Salad Bar • Fresh fruit or dessert | <p>Dinner</p> <ul style="list-style-type: none"> • Pork Lasagne or Vegan Lasagne • Chicken Skewers or Halloumi Skewers • Cumberland Sausages or Vegan sausages • Mashed potatoes, cabbage, sweetcorn • Salad Bar • Fresh fruit or dessert |
|--|--|



EXCURSIONS



While on your Ardmore vacation you will be taken on two excursions every week;

One full day excursion

All entrance fees are included. Examples of some of our Full day excursions are London / Windsor / Oxford/ Cambridge.

One half day excursion

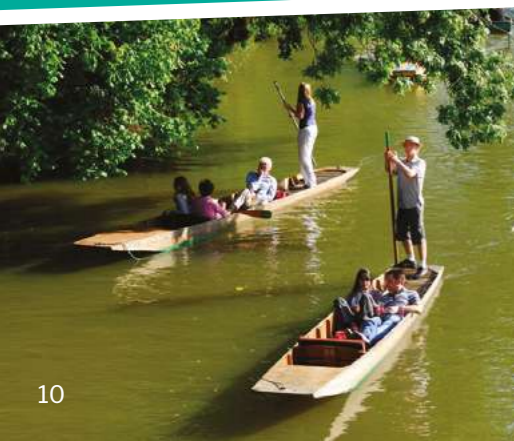
If you have morning lessons your half day excursion will be between 14:00 – 17:30, if you have afternoon lessons your excursion will be 9:00 – 12:30. Some example destinations are Reading / Windsor / Brighton/ Bath.

You will be picked up by coach from your centre and taken to your excursion destination.

Information on the places you will be visiting will be provided to you in activities before your excursion. You will also find information posted on your centres activities notice board every week. Your notice board will also give you information on which group you are in and which member of Ardmore staff will be looking after you on the excursion.

On excursion you will also be issued with an Identity card which has all the emergency numbers you would need in case of an emergency.

NB - The destination of your excursions will differ every week and depend on which centre you are staying in.



LOCATION DETAILS



| | |
|---|---------------------------------|
| Year of Foundation | 1966 |
| How long we have operated at this site? | 8 years |
| Dates available | Summer - See price list |
| Average age of students | 9-17 years |
| Size of the campus | 200 Acres |
| Details about internet access | Wi-Fi available on campus |
| Telephone details | None |
| Ardmore resident staff living on the campus? | Yes |
| Security on campus | Yes |
| Accommodation type | Yes |
| Max per room | Single ensuite or Single shared |
| Blocks of accommodation | 1 |
| Bathroom facilities | The Quads or Eastwood |
| Bed linen provided? | Ensuite or shared facilities |
| Towels provided? | Yes |

| | |
|--|------------------------------------|
| GL Accommodation | Single rooms |
| Ratio of showers / toilet to beds | Ensuite 1:1 and Shared 1:5 |
| Additional facilities in accommodation / boarding houses? | Kitchen in each accommodation flat |
| Internet access available in accommodation / boarding houses? | Yes |
| Telephone in Accommodation / boarding houses? | No |
| Keys / Room locks | Yes - Swipe Card and Keys |
| Male and female split in accommodation | Yes |
| Kitchen for GL use | Yes - Fridge, Kettle and Microwave |
| Television room | No |
| Sitting/common room | Kitchen facility in all flats |
| Host family accommodation available and where? | No |

WHAT IS EXPECTED OF STUDENTS



Centre rules:

Here's a list of few rules that we expect you to follow during your stay at Ardmore.



Respect

Students must treat other students, Ardmore staff, the College staff and members of the public with respect at all times.



Please and thank you

Students must remember to be courteous and show good manners to other students, Ardmore staff, catering & college staff and members of the public.



Speak english

Students are expected to speak English at all times, whether you are talking to people of the same or different nationalities.



No bullying

Bullying is the deliberate and / or repeated action of making another person unhappy. Bullying of any nature will not be tolerated and may result in students being sent home at their own expense. Students are also expected to report any bullying which they see to an Ardmore member of staff.



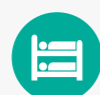
Integration

Students are expected to try and integrate with all of the different nationalities and ethnic backgrounds that we have at our centres. Students are also actively encouraged to learn as much as possible about the different countries and cultures of other students.



Individual students

Students who are attending our schools as part of a group are expected to do their best to include and become friends with all of the students who are not in a group.



Bedtime

All students are expected to be in their rooms by 10:30pm after evening entertainments and to have lights out and be quiet by 11pm.



WHAT TO BRING WITH YOU



Packing list:

In order to help you prepare for your trip, we have compiled a list of items we recommend that you bring:



School supplies:

We will provide notebooks, but students should bring writing utensils (pens or pencils).



Day pack:

A smaller travel bag for excursions.



Passport:

The details of your flight tickets (if travelling alone) and Passport. Contact details for the student's parents written in English.



Travel adapter:

Students should bring with them a travel adapter with three pins *Many items can be purchased at local shops if necessary.



Shoes:

Comfortable walking shoes, tennis shoes or trainers & sandals.



Clothing:

We suggest clothing you can layer. Light-weight summer clothes (shorts and t-shirts), at least two pairs of long trousers or jeans, one warm jacket or sweatshirt, and a warm hat. Remember: days may be warm, but it can be cool and windy at night.



Money:

Students should bring small amounts of British currency with them. There are bank machines located near all our campuses.



Towels & Toiletries:

Shampoo, conditioner, toothpaste, sunscreen, medicine, etc. Students are all advised to bring a towel. Students who need a hairdryer will need to bring this.



Personal Items:

Alarm Clock, Camera, and Sunglasses.

- Due to the large number of students at the colleges, we strongly recommend that students mark their clothing with their names to avoid lost or stolen property.
- Emergency contact details must be provided for each child to pass on to the Centre Director.
- Medication and medical details should always be provided in advance.
- For individual students traveling alone, all transport details should be made





SPECIALIST COURSES



Ardmore offers the following specialist sports courses at The University of Bath: Horse Riding, Golf Academy, and Performing Arts.

If you have picked one of these courses, please read the information below; in this way, you will not forget to bring with you essential sports equipment and clothing; if you do not bring them with you, you might have to purchase these items in the UK.

Horse Riding

AGE: 9-17 years old
LESSONS: 12 hours per week
LEVELS: Beginner to Advanced

What to bring

Student must bring own heeled boots (not trainers), and during session they must wear long trousers and short or long sleeves tops (no strappy tops) and helmet



Golf Academy

AGE: 12-17 years old
LESSONS: 12 hours per week
LEVELS: Beginner to Advanced

What to bring

Students must bring smart Golf attire and their own golf clubs.



SAMPLE PROGRAMME



| | Morning | Afternoon | Evening |
|-----------|---|------------------------|--------------------------|
| Sunday | Welcome to Ardmore | | |
| Monday | Sport Academy Training | Lessons | Welcome Icebreaker Games |
| Tuesday | Sport Academy Training | Lessons | Egg Protector |
| Wednesday | Half Day Excursion | Lessons | Talent Show |
| Thursday | Sport Academy Training | Lessons | Casino Night |
| Friday | Sport Academy Training | Lessons | Disco |
| Saturday | Full Day Excursion | | Sports Tournament |
| Sunday | Sports And Leisure Activities On Campus / Optional Extra Excursions | | Movie Night |
| Monday | Lessons | Sport Academy Training | Capture The Flag |
| Tuesday | Lessons | Sport Academy Training | Find Dr Ardmore |
| Wednesday | Lessons | Half Day Excursion | Karaoke |
| Thursday | Lessons | Sport Academy Training | Rounders |
| Friday | Lessons | Sport Academy Training | Disco |
| Saturday | Full Day Excursion | | Mini Olympics |
| Sunday | Goodbye Ardmore | | |

*The Programme may vary due to operational reasons



PLEASE READ CAREFULLY



Old notes

These are not accepted anymore in all of the shops, supermarkets, restaurants, and café; we cannot help the group leaders or students change the old notes into new ones. Please bring **ONLY** the new notes with you to the UK.



Credit cards/bank cards

Everyone is advised to bring a credit card as most shops, supermarkets, restaurants, and café do NOT accept cash but only payment with cards.



Water bottles

A lot of our centres are going plastic free so we suggest students bringing your own water bottle.



Ardmore

Helping Young Minds Meet the World

Ardmore Language Schools, Berkshire College, Hall Place, Burchetts Green,
Berkshire, SL6 6QR, UK

+44 (0)1628 826699

✉ info@theardmoregroup.com 🌐 www.theardmoregroup.com